

M600 Series 3 1/4" Frame Depth Awning (Project-Out)

M600 SERIES AWNING (PROJECT-OUT)

FEATURES

- ◇ Commercial Framing System
 - 3 1/4" main frame
 - Sealable corner keys
 - Crimp/Screw connections
 - 0.094" wall thickness of interior and exterior walls, 0.070" wall thickness elsewhere
- ◇ Enhanced Design
 - Azo-braided channel receives Azon pour and debridge thermal break which is 1/2" wide in all main frame and vent rail extrusions
 - Clean squared edges
 - 3" narrow sitelines
- ◇ With or Without Integral Nailing Fin
- ◇ Glazing
 - 1" insulated glass
- ◇ Hardware
 - Heavy-commercial Truth Contour™ locking system (Crank-out only)
 - Low profile cam handle (Push-out only)
 - Crank-out available (4-Bar hinges or butt hinges)
 - Push-out available (4-Bar hinges)
- ◇ Screen
 - Wicket screen (Push-out only)
 - Standard screens (Crank-out only)
- ◇ Meets ADA Requirements (ADA Handle Required, Crank-out only)

OPTIONS

- ◇ Available Configurations
 - Project-out awning
 - Push-out or Crank-out
 - Wire frame capabilities
- ◇ Muntin Choices
 - Internal or simulated divided lites available
- ◇ Limited travel hardware
- ◇ Glazing
 - Multiple Low-E and argon glazing choices
 - Triple glazing (Energy T/G)
 - Capillary tubes
 - Wide variety of glazing, tinting and thickness options
- ◇ Panning & Trim Choices
 - Wide variety of panning, receptor and trim available
- ◇ Mulling
 - Wide variety of structural mulls

BENEFITS

- ◇ The capacity to match exterior colors for unique project facades
- ◇ The ability to facilitate large sizes for taller and wider window openings
- ◇ Modern appearance merged with superior structural integrity
- ◇ Florida Product Approval # 27676

PERFORMANCE

◇ Structural & Thermal

Model	Awning (Project-Out)			Fixed/Awning/Fixed (Stacked)
Test Sizes	48" x 72"	36" x 84"	60" x 36"	60" x 144"
NAFS Rating	AW-PG70-AP			
Structural Load P.S.F.	70.18			
Air at 50 MPH (cfm/ft ²)	<.10			
Water (No Penetration) P.S.F.	12.11			
CR (Condensation Resistance)	41-49			
U-Value (ranges based on multiple Low-E/Argon combinations)	0.32-0.43			
SHGC (ranges based on multiple Low-E/Argon combinations)	0.11-0.45			

Operating Force: 6 lbf (maintain motion), 8 lbf (latches), 3 lbf (ADA Handle)

Thermal values shown are a range based on Quaker's most popular glass package options. Other available glass options may result in scores outside of the range shown.

Our products are tested to the standards of and certified by some of the foremost organizations in the fenestration industry.



ARCHITECTURAL PAINT COATINGS AND FINISHES

◇ Baked on powder coat finish meets AAMA 2604 (an FGIA specification) and is available in unlimited colors

- Quaker Impressive Palette of Colors



- 7 Resemble Colors (painted finish resembling anodized)



- Unlimited Custom Colors

◇ AAMA 2605 (an FGIA specification) powder coat finishes (not available for all colors shown)

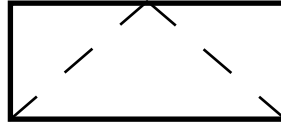
◇ SolarLE Paint Finish (available with Textured Black and Dark Espresso colors only)

◇ AAMA 611-98 Class I (an FGIA specification) clear and tinted anodized finishes

* Printed colors shown here may not accurately depict actual painted colors. Color samples are available upon request.

Our products are tested to the standards of and certified by some of the foremost organizations in the fenestration industry.



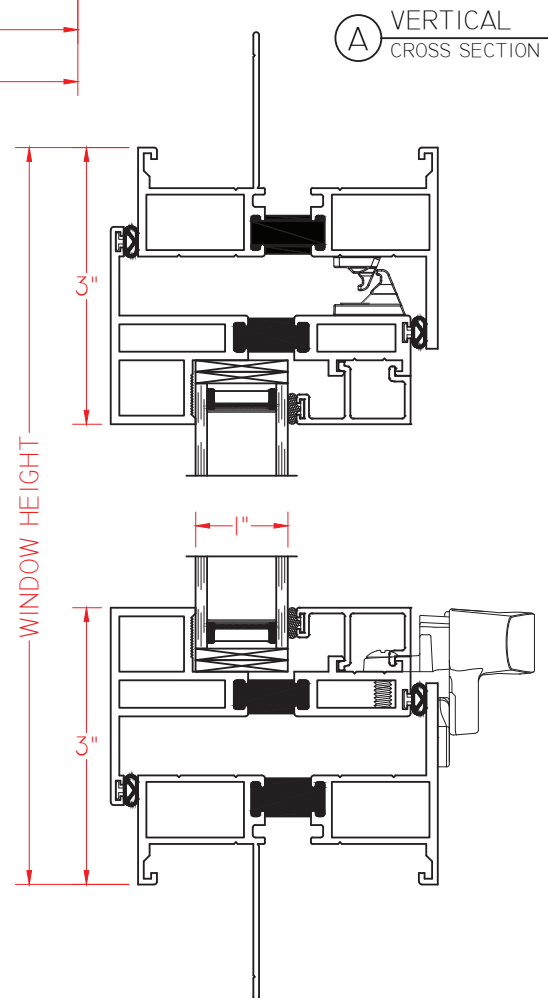
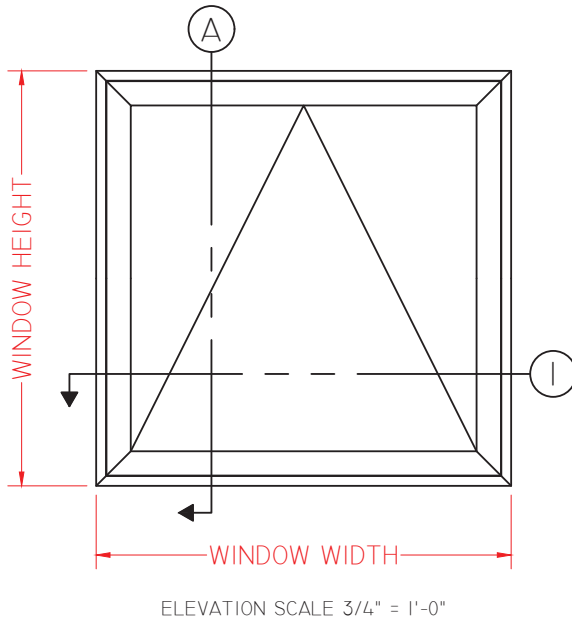
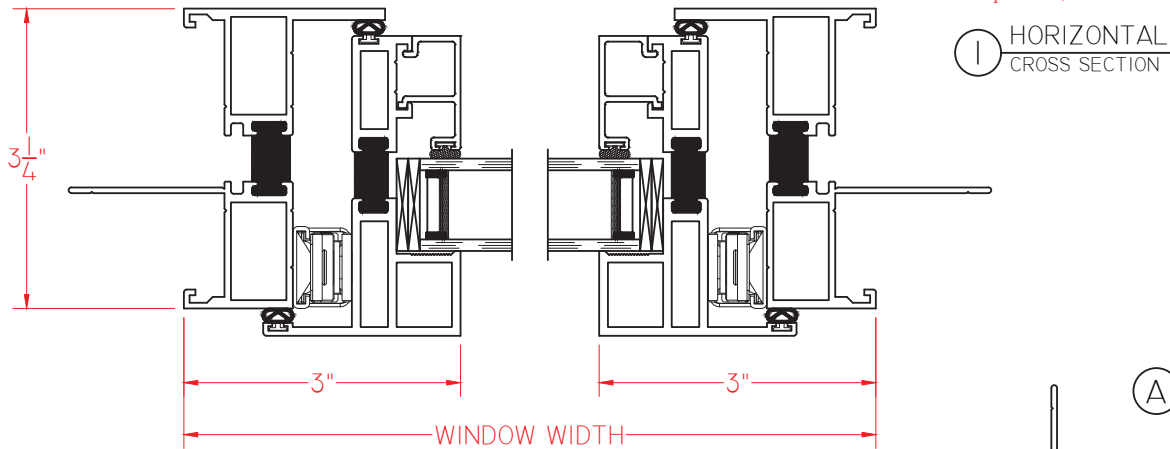


M600 Series 3 1/4" Frame Depth Awning (Project-Out)

M600 SERIES AWNING (PROJECT-OUT) PUSH OUT

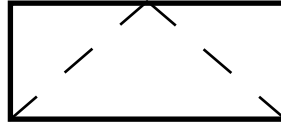
Shown With Nailing Fins

This document contains confidential and proprietary information intended for the private use of Quaker.
© 2016 Quaker Window Products Co., INC. All rights reserved.
Quaker reserves the right to change any/all designs without notice. Due to periodic re-certification requirements, result shown may vary.



Our products are tested to the standards of and certified by some of the foremost organizations in the fenestration industry.



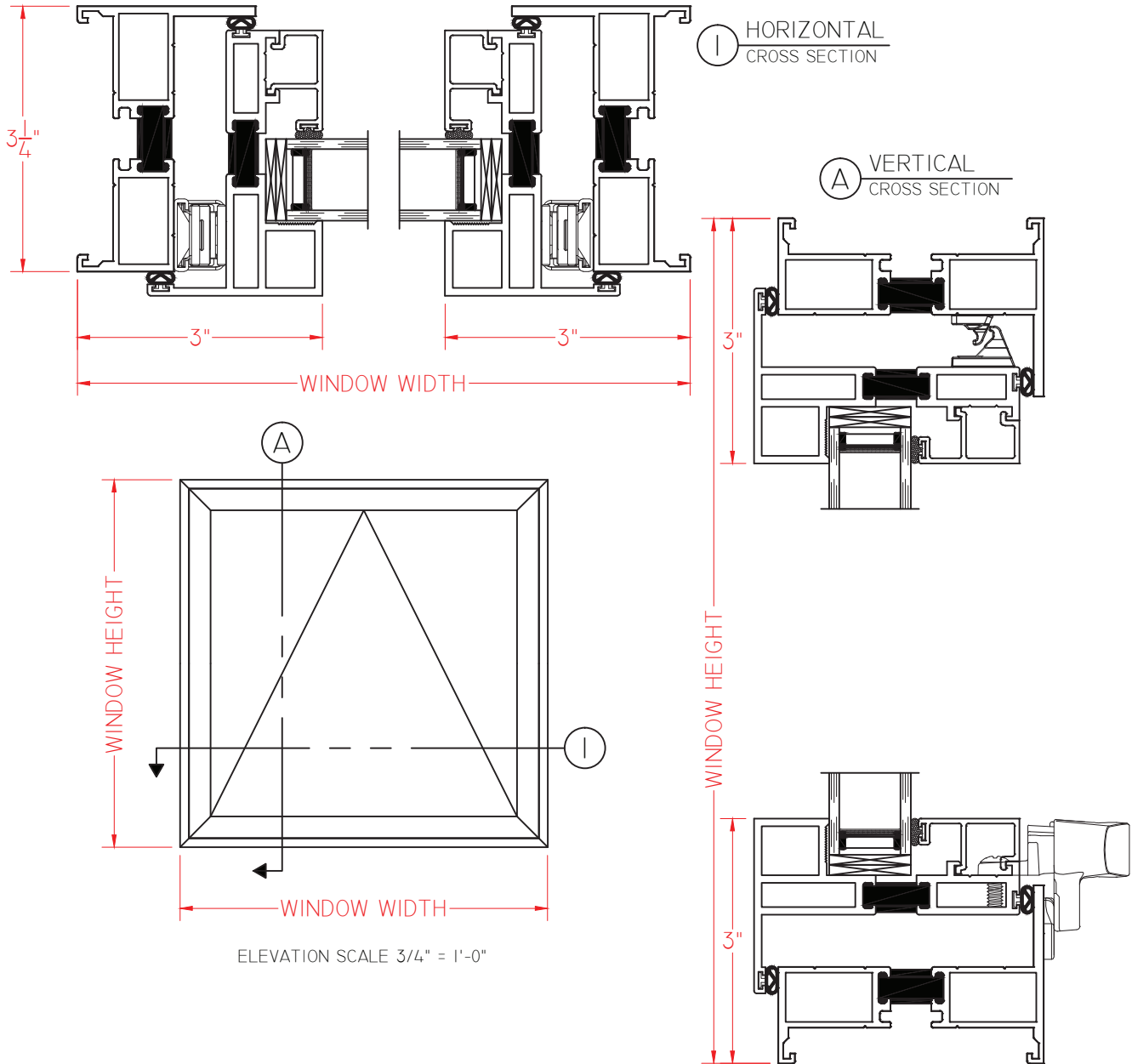


M600 Series 3 1/4" Frame Depth Awning (Project-Out)

M600 SERIES AWNING (PROJECT-OUT) PUSH OUT

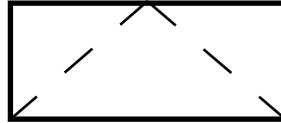
Shown With No Nailing Fins

This document contains confidential and proprietary information intended for the private use of Quaker.
© 2016 Quaker Window Products Co., INC. All rights reserved.
Quaker reserves the right to change any/all designs without notice. Due to periodic re-certification requirements, result shown may vary.



Our products are tested to the standards of and certified by some of the foremost organizations in the fenestration industry.



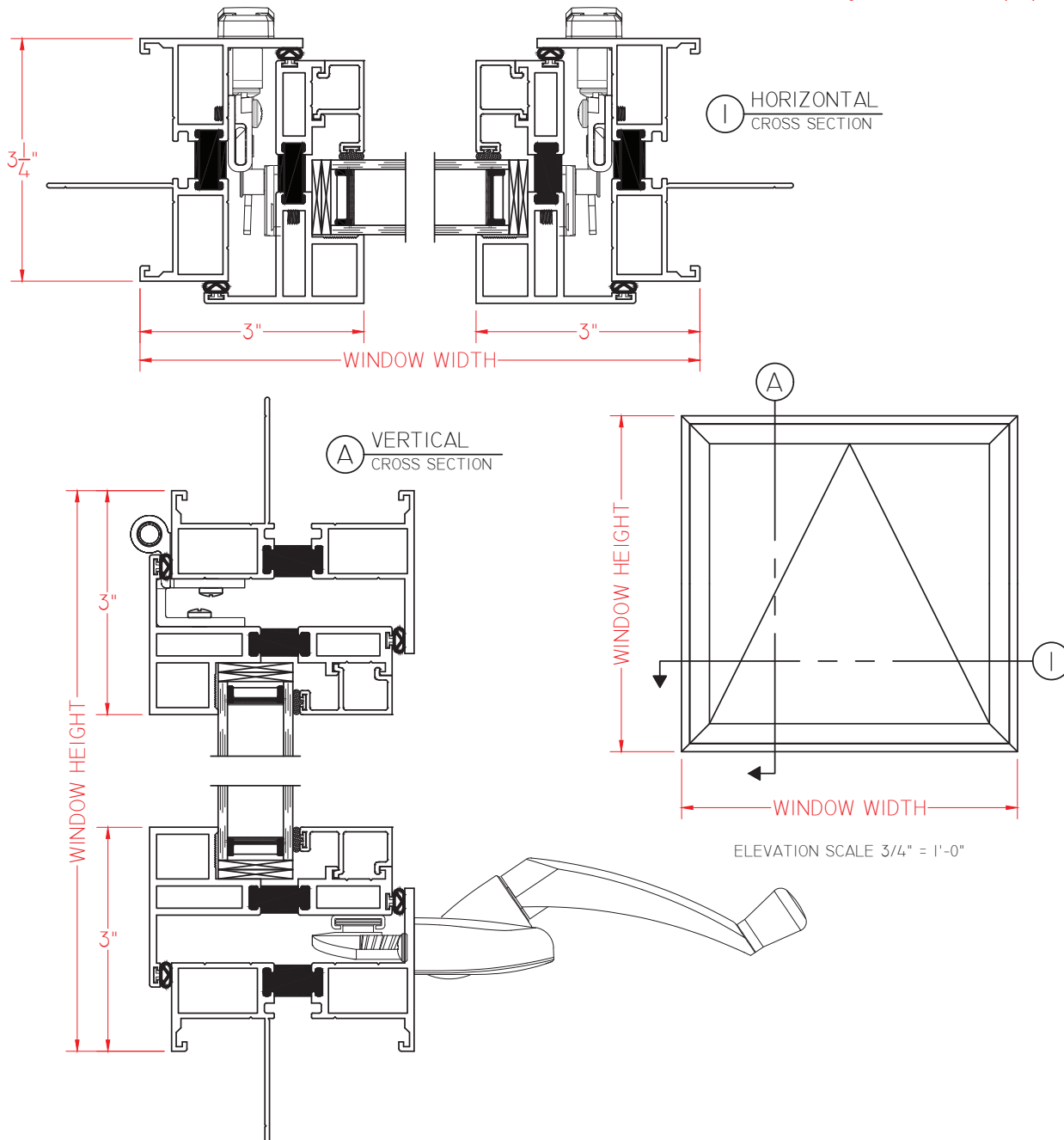


M600 Series
3 1/4" Frame Depth
Awning (Project-Out)

M600 SERIES AWNING (PROJECT-OUT) CRANK OUT

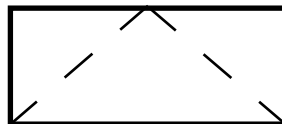
Shown with Nailing Fins

This document contains confidential and proprietary information intended for the private use of Quaker.
© 2016 Quaker Window Products Co., INC. All rights reserved.
Quaker reserves the right to change any/all designs without notice. Due to periodic re-certification requirements, result shown may vary.



Our products are tested to the standards of and certified by some of the foremost organizations in the fenestration industry.



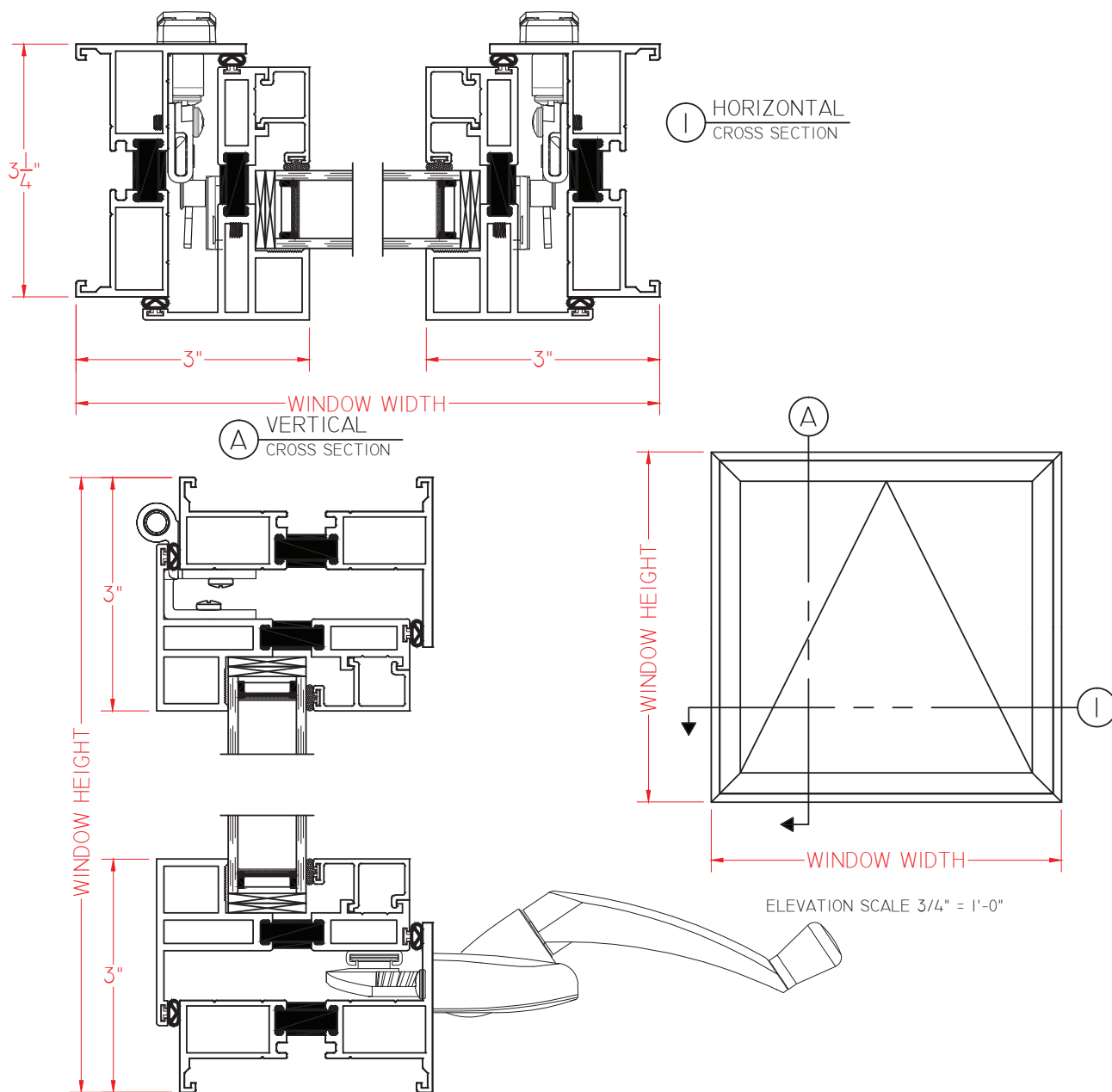


M600 Series
3 1/4" Frame Depth
Awning (Project-Out)

M600 SERIES AWNING (PROJECT-OUT) CRANK OUT

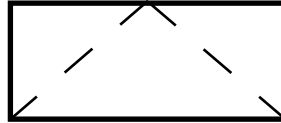
Shown With No Nailing Fins

This document contains confidential and proprietary information intended for the private use of Quaker.
© 2016 Quaker Window Products Co., INC. All rights reserved.
Quaker reserves the right to change any/all designs without notice. Due to periodic re-certification requirements, result shown may vary.



Our products are tested to the standards of and certified by some of the foremost organizations in the fenestration industry.





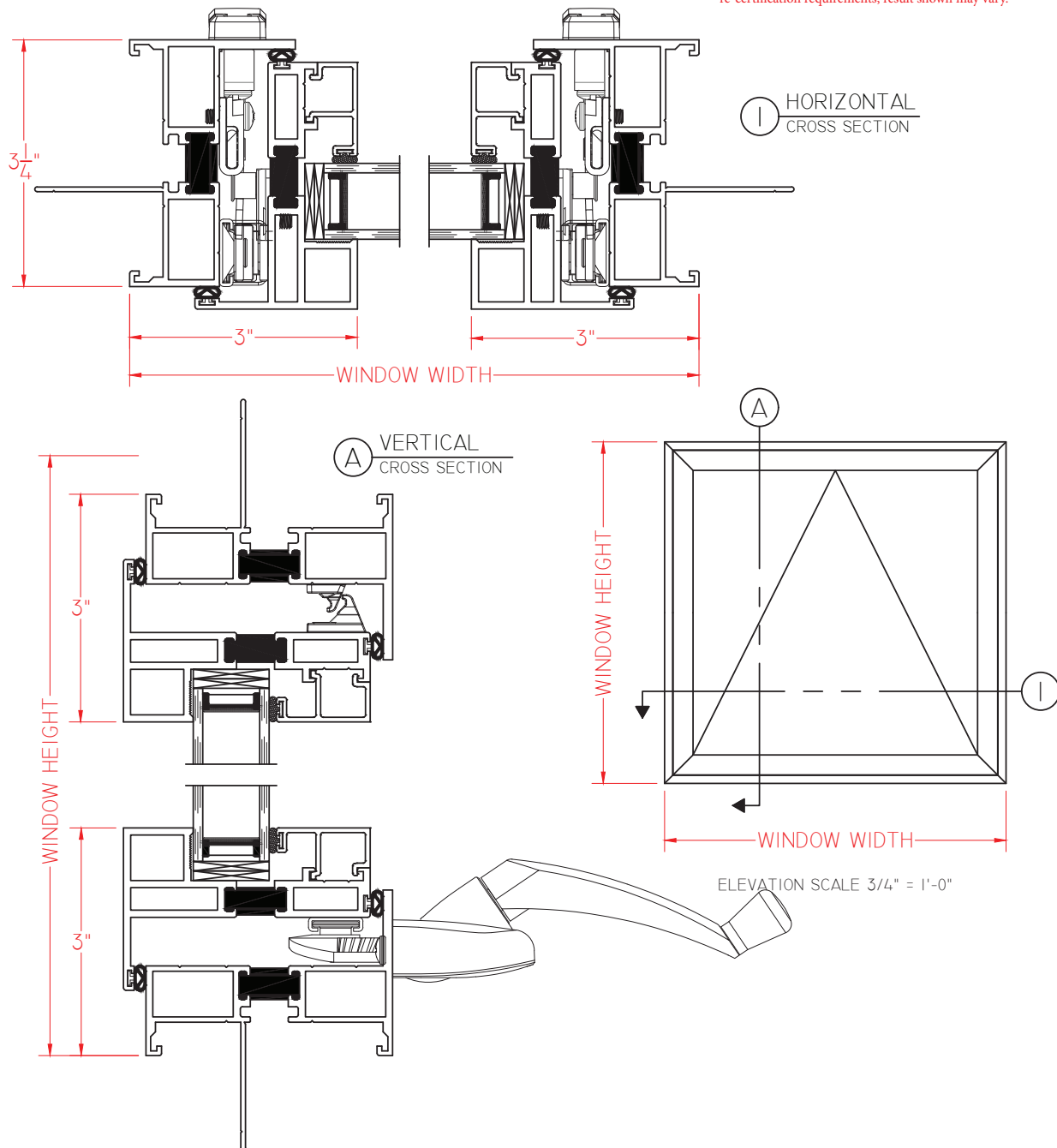
M600 Series 3 1/4" Frame Depth Awning (Project-Out)

M600 SERIES AWNING (PROJECT-OUT)

CRANK OUT WITH
4-BAR HARDWARE

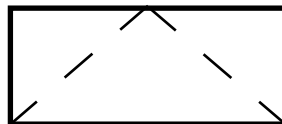
Shown With Nailing Fins

This document contains confidential and proprietary information intended for the private use of Quaker.
© 2016 Quaker Window Products Co., INC. All rights reserved.
Quaker reserves the right to change any/all designs without notice. Due to periodic re-certification requirements, result shown may vary.



Our products are tested to the standards of and certified by some of the foremost organizations in the fenestration industry.





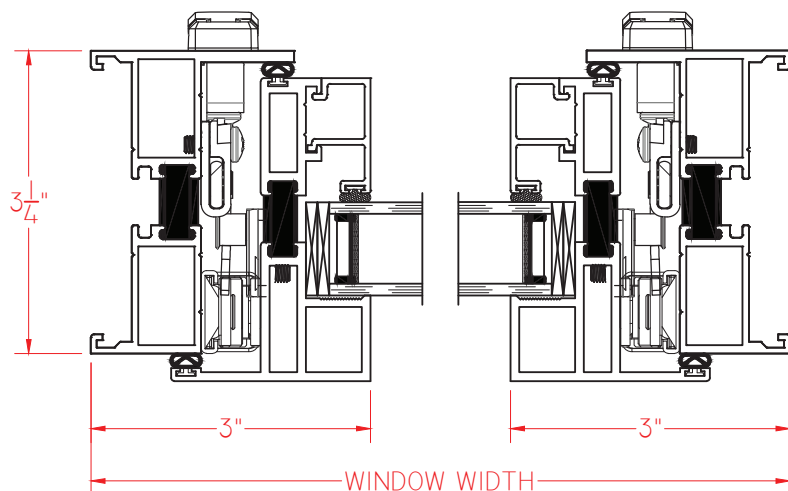
M600 Series 3 1/4" Frame Depth Awning (Project-Out)

M600 SERIES AWNING (PROJECT-OUT)

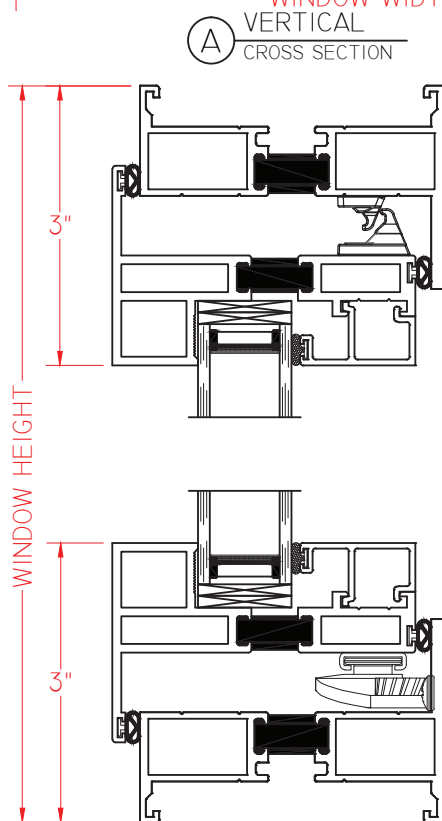
CRANK OUT WITH
4-BAR HARDWARE

Shown With No Nailing Fins

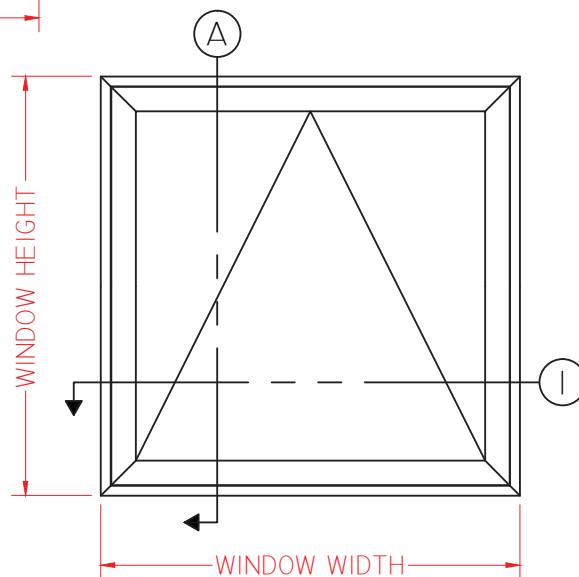
This document contains confidential and proprietary information intended for the private use of Quaker.
© 2016 Quaker Window Products Co., INC. All rights reserved.
Quaker reserves the right to change any/all designs without notice. Due to periodic re-certification requirements, result shown may vary.



① HORIZONTAL
CROSS SECTION



Ⓐ VERTICAL
CROSS SECTION



ELEVATION SCALE 3/4" = 1'-0"

Our products are tested to the standards of and certified by some of the foremost organizations in the fenestration industry.

